

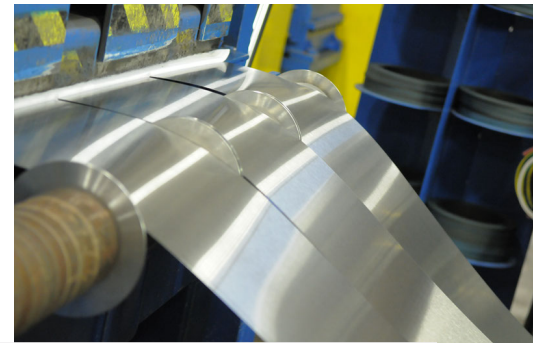
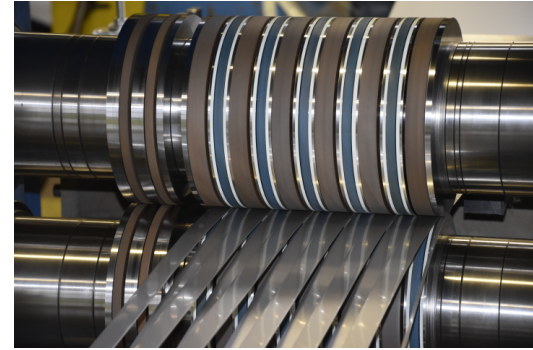
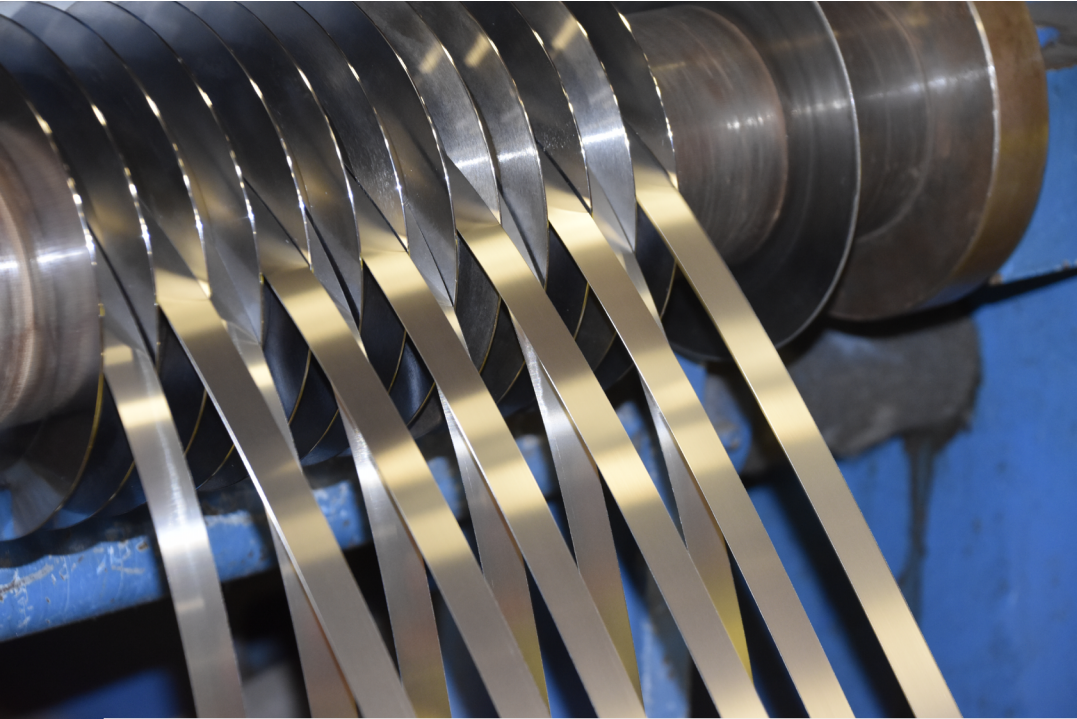


NATIONAL KWIKMETAL SERVICE

A BANNER INDUSTRIES COMPANY

(800) 722-5029

WWW.NKS.COM



National Kwikmetal Service LLC, has been known in the industry as a “Premier” Stainless Steel and Aluminum flat rolled coil and precision blank service center in North American. We always prided ourselves as supplying a quality product and excellent service to our customers worldwide.

▪

We are now excited to offer those same customers both centerless ground bar products, and Titanium and Nickel grades in flat rolled coil through our new parent company Banner Industries www.bargrind.com.

▪

Banner Industries has been a premier supplier of precision ground bar, flat rolled titanium, and high nickel grades for over 50 years. The 6 centerless grinding, turning, and straightening locations across all of North America will allow NKS to expand the “Banner” product line to our loyal customer base.

LOCATIONS

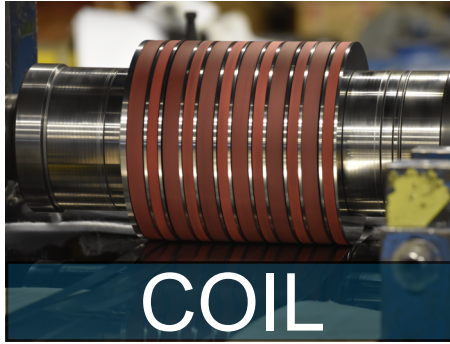
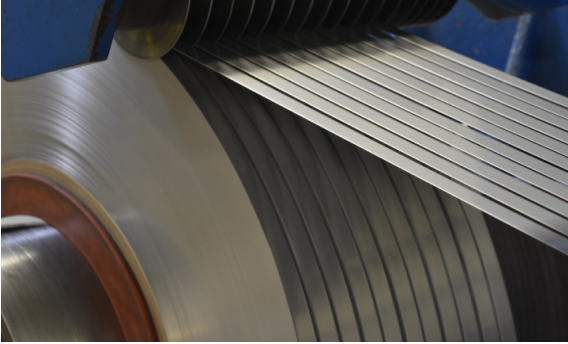
DES PLAINES, IL
560 Santa Rosa Dr.
Des Plaines, IL 60018

ITASCA, IL
900 Hollywood Ave.
Itasca, IL 60143

LA VERGNE, TN
174 Jefferson Pike
Laverne, TN 37086

QUERÉTARO, MX
Carretera Estatal #431
Col. Ex Hacienda la
Machorra,
CP 76246 El Marques,
Querétaro, Mexico

FOLLOW US ON SOCIAL MEDIA
[@NKSSTEEL](https://twitter.com/NKSSTEEL)



COIL

STAINLESS STEEL

AUSTENITIC GRADES

301, 304, 305, 309S, 310S, 316L, 317L, 321, 347

FERRITIC GRADES (ANNEALED)

409, 410S, 434, 439, 441

MARTENSITIC GRADES

410, 420, 440A

PRECIPITATION HARDENING

17-4, 15-5, 17-7 Condition A & C

INVENTORY GAUGE RANGE

0.001" - 0.187"

WIDTH

0.187" - 52.000"

Small Quantity Rerolling Capabilities

ALUMINUM

GRADES

1XXX, 3XXX, 5XXX, 6XXX, 7XXX

TEMPERS

All

MILL FINISH

Anodize & OSB Finishes

INVENTORY GAUGE RANGE

0.012" - 0.187"

WIDTH

0.187" - 52.0"

TITANIUM

GRADES

1-4

INVENTORY GAUGE RANGE

0.008" - 0.125"

WIDTH

0.187" - 48.0"

NICKEL ALLOY

GRADES

A286, 625, 718

INVENTORY GAUGE RANGE:

0.008" - 0.125"

WIDTH

0.187" - 48.0"

SLIT COIL

SLITTER	GAUGE RANGE
12" YODER (IL)	0.001" - 0.030"
24" K & S (IL)	0.004" - 0.135"
24" K & S (IL)	0.004" - 0.032"
24" BRANER (IL)	0.007" - 0.075"
52" BRANER (IL)	0.010" - 0.120"
26" STAMCO (TN)	0.015" - 0.095"
48" STAMCO (TN)	0.016" - 0.135"
24" YODER (MX)	0.010" - 0.075"

CUT-TO-LENGTH

Gauge: 0.006" - 0.040"

Width: 0.500" - 24.0"

Length: 5.00" - 144"

EDGING CONDITION

Gauge: 0.015" - 0.040"

Edges: #1, 3, 4

COATINGS

Polyester, Epoxy, Hybrids
 Anti-fingerprint
 Cosmetic/Functional
 Large/Small Quantity Runs
 Dry Lube

SUBSTRATES	THICKNESS	WIDTH
Stainless Steel	0.004" - 0.060"	2.000"
Aluminum	0.014" - 0.060"	60.000"

METALLURGICAL LAB

On Staff Metallurgist
 Physical and Chemical Testing

AIGI Automotive Quality Initiatives
 100% Traceability

